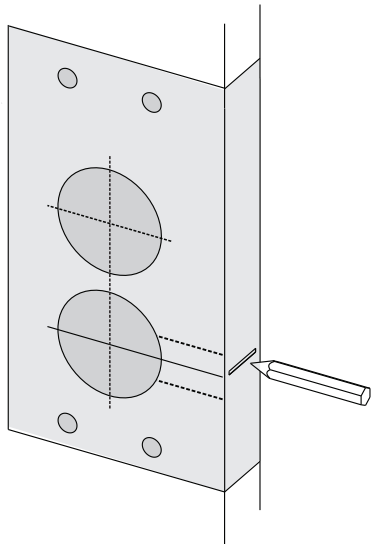


SUITS 33mm TO 45mm THICK DOORS

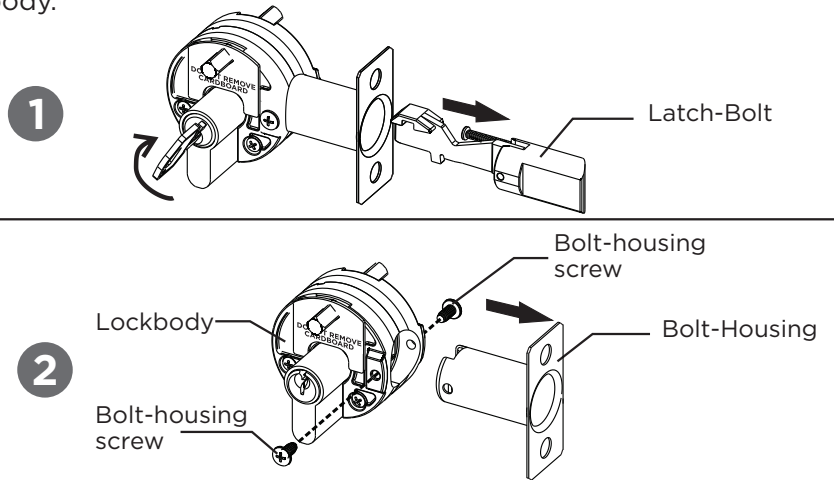
Step 1. Door Preparation

- Fold the supplied template and position template on door edge.
 - Mark latch height on door edge and mark hole centres of all holes.
 - Position template on other side of door, lining up latch height line to same position as first marking.
 - Measure door thickness and mark centre of door thickness on latch height marking.
 - Pilot drill all holes on both sides of the door with 3mm drill bit.
 - Drill two 54mm holes and four 10mm holes as per template. Drill holes from both sides of door to avoid splintering.
 - Drill 25mm hole into the edge of the door, central to the door thickness. Ensure the hole is drilled squarely.
- NOTE** if retrofitting, 22mm hole is OK.



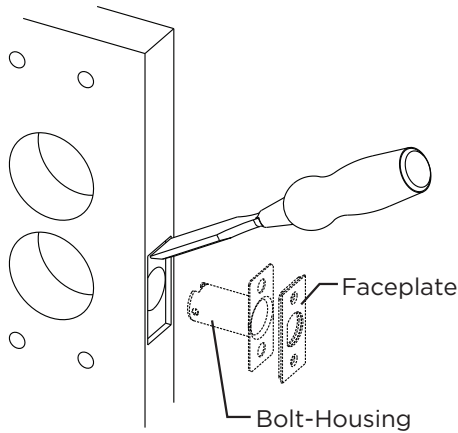
Step 2. Remove Latch-Bolt and Bolt Housing

1. Rotate key until latch-bolt pops out of bolt housing.
2. Remove both bolt-housing screws and pull bolt-housing out of lockbody.



Step 3. Chisel Faceplate Recess

- Position bolt-housing and faceplate centrally within 25mm hole in door edge and mark around the rectangular portion of faceplate.
- Chisel marked rectangle to a depth of 3.5mm or until bolt-housing with faceplate is flush with door edge.
- Remove bolt-housing and faceplate from door before moving to next step.

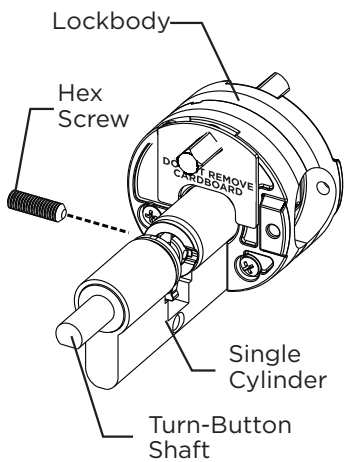


Step 4. Single Cylinder Only

This step only applies to single cylinder product. Skip to STEP 5 if installing double cylinder product.

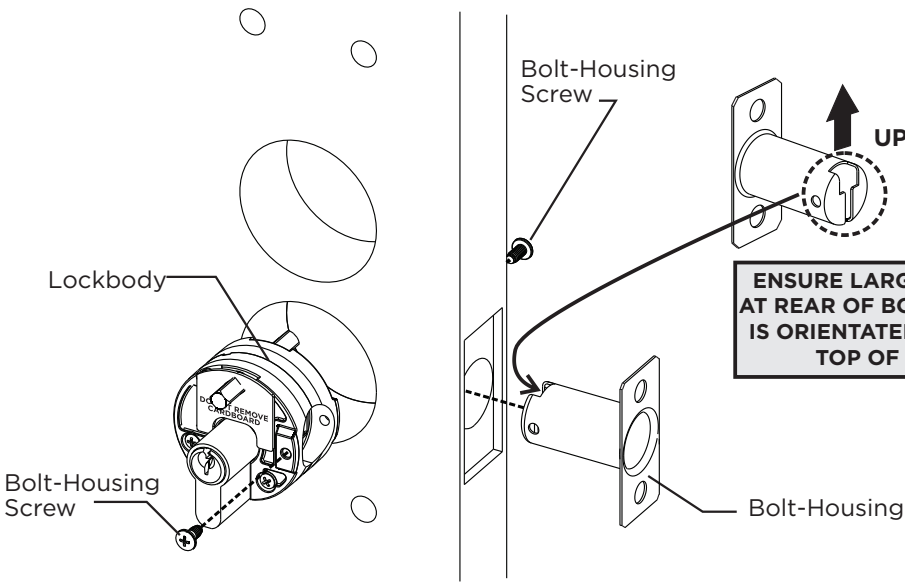
For single cylinder product, the turn-button shaft must be on the interior side of the door. If required, re-orientate cylinder as below:

- Remove the hex screw at the rear of the lockbody with allen key provided.
- Flip the cylinder so that the shaft is on the interior side of the door and slide cylinder back into lockbody.
- Re-install the hex screw into the lockbody and tighten.
- Ensure **DO NOT REMOVE CARDBOARD** remains on lockbody.



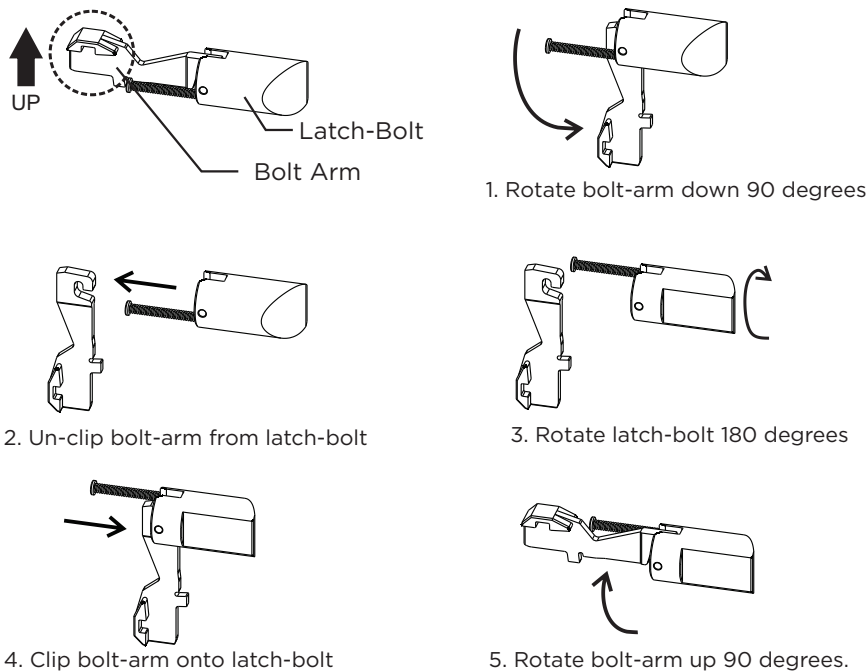
Step 5. Install Lockbody

- Install lockbody into door, with orientation as shown.
- Orientate bolt-housing as shown - **large opening at rear of bolt housing must be orientated towards top of door.**
- Install bolt-housing into 25mm hole in door and locate in lockbody.
- Install 2 x bolt-housing screws, one from each side.



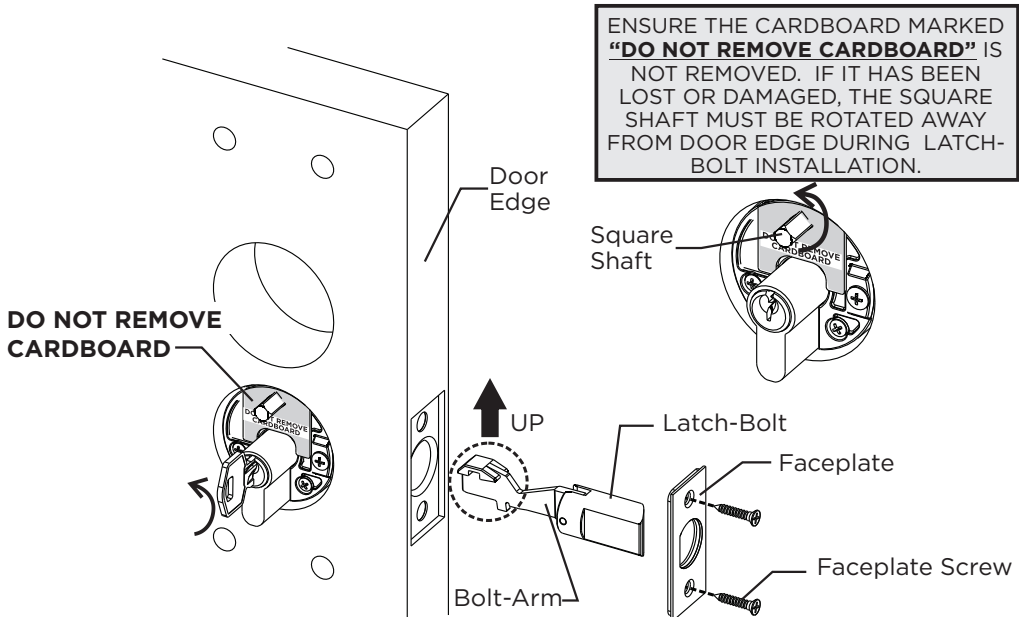
Step 6. Bolt Orientation

- With bolt-arm orientated UP as shown, check that the curved side of the latch-bolt is orientated towards the direction of door closure.
- If curve on latch-bolt is facing the wrong direction, follow steps below to re-orientate the latch-bolt.
- Ensure spring and pin are not removed during bolt re-orientation.

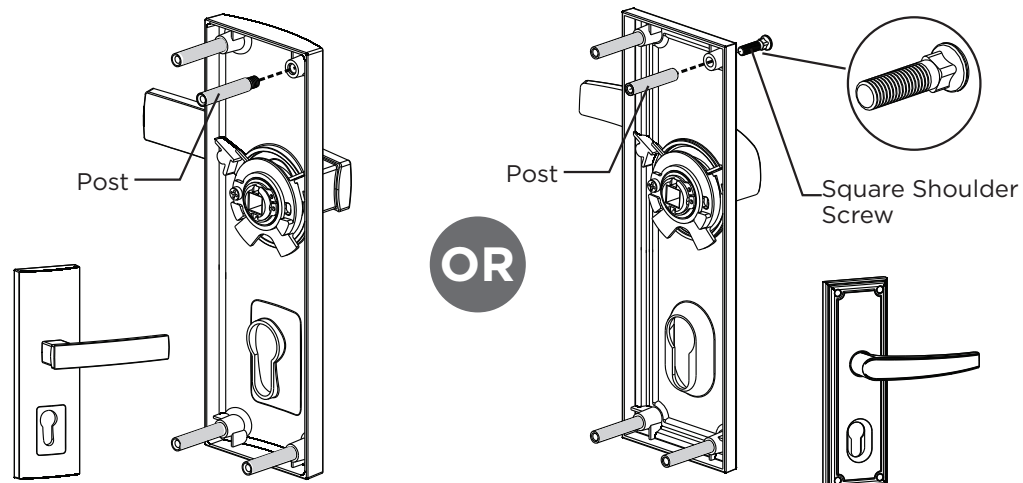


Step 7. Install Latch Bolt and Faceplate

- Push correctly orientated latch-bolt into bolt-housing, ensuring rear of bolt-arm is orientated UP as shown.
- Rotate key away from door edge to retract the latch-bolt.
- If bolt does not retract, then cardboard may have been removed or damaged. If so follow note in diagram below.
- Once latch-bolt is installed, pre-drill holes for faceplate.
- Position faceplate and install two faceplate screws (#6 x 19mm)



Step 8. Screw Post Installation



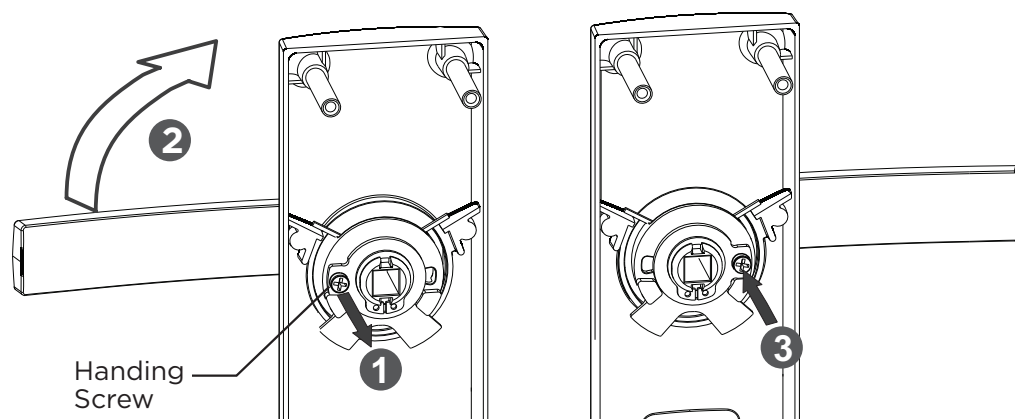
Linear Secure

- Install four posts to Linear Secure exterior furniture.

Linear Secure Classic

- Insert square shoulder screw (M4 x 17mm) through Linear Secure Classic exterior furniture and screw on posts.

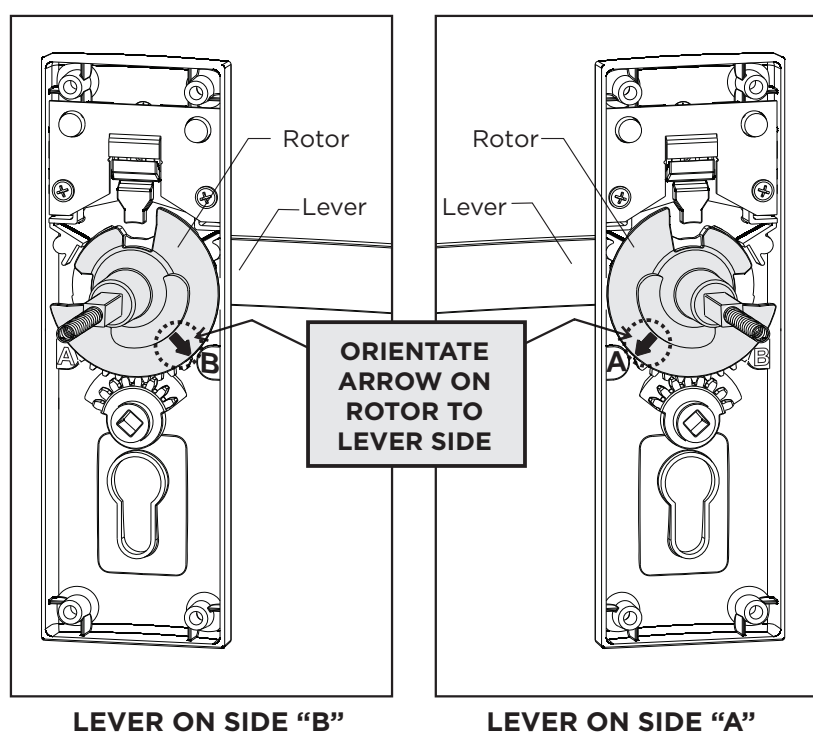
Step 9. Lever Orientation



- Hold Exterior Furniture on outside door face and check that lever orientation is correct.
- If lever orientation needs to be changed:
 1. Loosen the handing screw. (Screw does not need to be removed)
 2. Rotate the lever up and around 180degrees
 3. Re-tighten handing screw.
- Check Interior lever orientation and repeat as above if necessary.

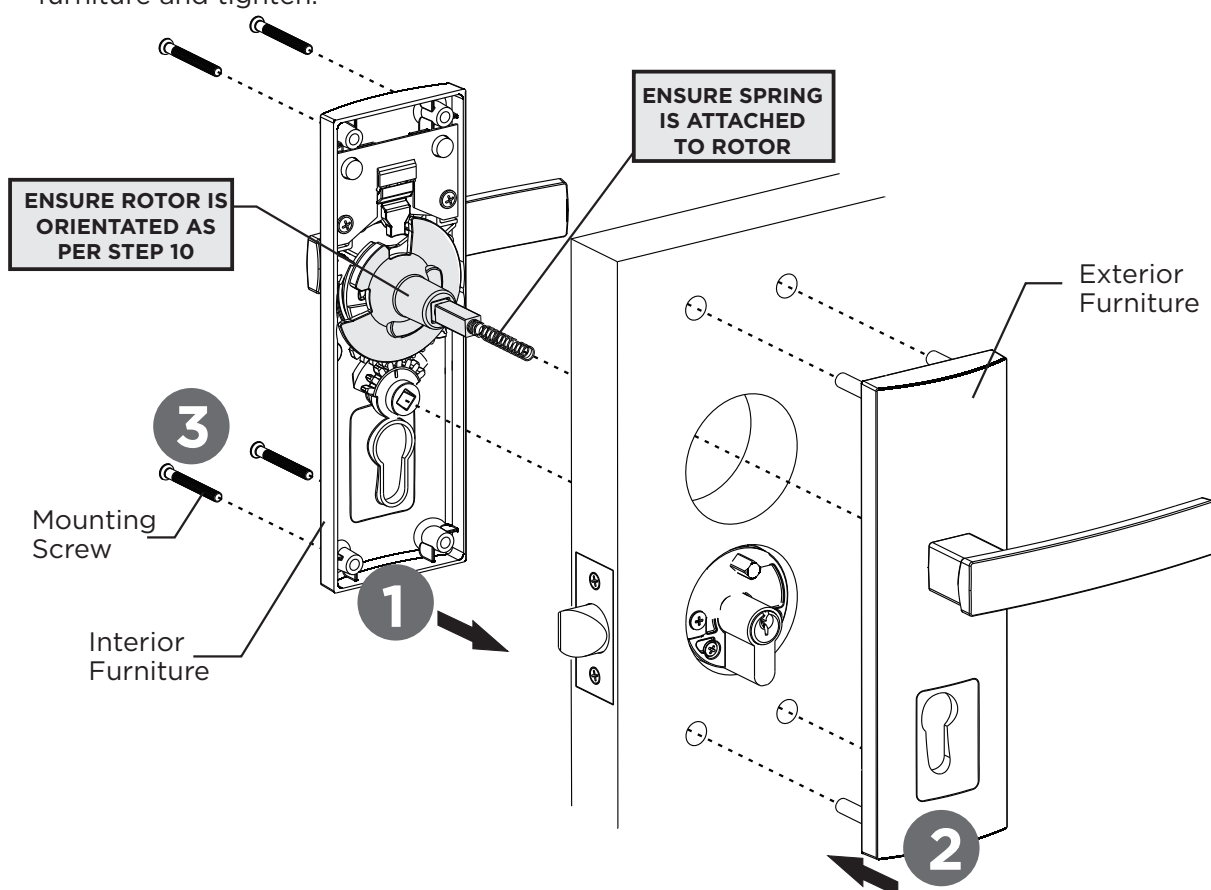
Step 10. Rotor Installation

- Locate Rotor in large square recess in Interior Furniture.
- Orientate arrow on Rotor towards same side as lever as per diagram below.



Step 11. Furniture Installation

1. Hold Rotor on Interior Furniture **(with Rotor orientated as per STEP 10)** and place on inside door face.
2. Place Exterior Furniture on outside door face while guiding spring and rotor shaft into Exterior furniture.
3. Install four mounting screws (M4 x 36mm) through holes in interior furniture and tighten.

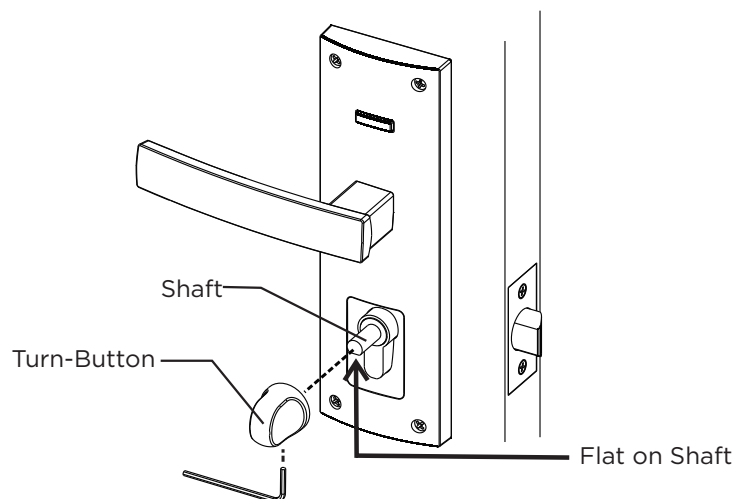


Step 12. Single Cylinder only

This step only applies to single cylinder product. Skip to STEP 13 if installing double cylinder product.

For single cylinder product:

- Install turn-button onto shaft on interior side of door. Orientate hex hole with flat on shaft.
- Tighten hex screw with allen key provided.



Step 13. Strike Plate Installation

- **Ensure door seals are installed before installing strike plate.**
- Gently close the door until the latch-bolt rests on the door jamb.
- Mark centre of bolt on door jamb, this mark can be used to position strike plate.
- Mark and drill 25mm hole inside the jamb to a depth of 25mm on marked bolt centre position.
- Position the strike plate and mark around. Chisel recess until strike plate sits flush with door jamb face.
- Fasten strike plate to door jamb with two strike plate screws (#8 x 25mm)
- Close door and check if the door rattles. If required remove strike plate and bend anti-rattle tab to reduce rattle. Then re-fit strike plate and re-check rattle. Repeat if required.

